

SCHEDULING AN IM4Q INTERVIEW

If you have been picked for an Independent Monitoring for Quality (IM4Q) survey, someone will call you to schedule it.



Your answers and personal information are kept private.



You will choose a day and time that works for you to complete the interview.



Interviews are in-person. If you can't or don't want to do it in-person you can schedule a virtual option.



If you have an in-person interview you can ask the interviewers to wear a mask if that helps you feel more comfortable.



You can choose where the interview happens. This could be at home, work, or a place in the community.



PAautism.org

Pennsylvania's leading source of autism-related resources and information

877-231-4244

The ASERT Collaborative is funded by the Office of Developmental Programs, PA Department of Human Services.

SCHEDULING AN IM4Q INTERVIEW

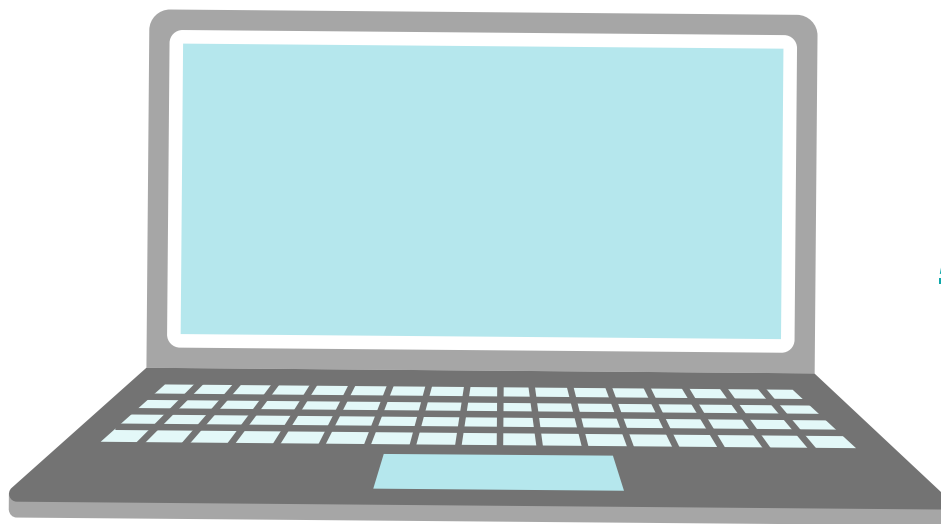
You can have a family member or staff with you during the interview.



Family members or staff can also answer questions at a different time.



The interview will take about 1 hour.



For more information,
click the link below:
[*Independent Monitoring
for Quality*](#)



PAautism.org

*Pennsylvania's leading
source of autism-related
resources and information*

877-231-4244

*The ASERT Collaborative
is funded by the Office of
Developmental Programs,
PA Department of Human Services.*