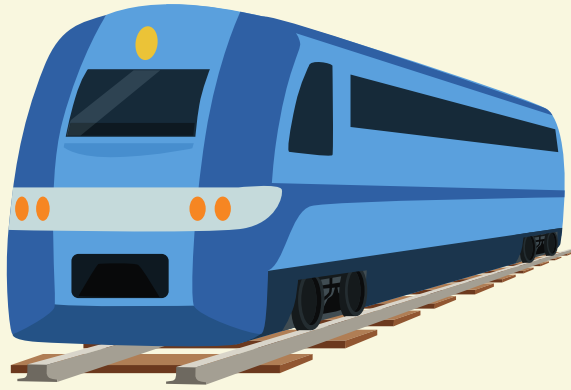
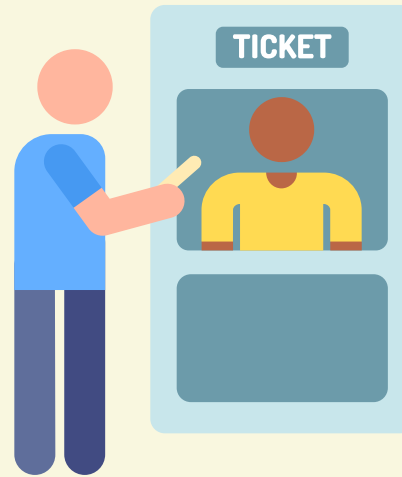


TRAIN TIPS

If I need to take a trip somewhere further away, I can take a train.



I will buy a ticket at the train station or online ahead of time.



I will walk to the correct platform and wait for it to arrive safely behind the lines.



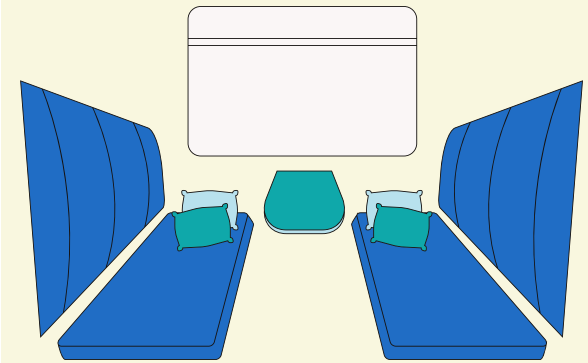
Once it arrives, I will let others exit and then show my ticket to the conductor as I walk on.



If I don't have an assigned seating area, I will find a seat myself and be respectful of those around me.



Most trains have a quiet car where I can sit if the noise or other passengers become overstimulating.

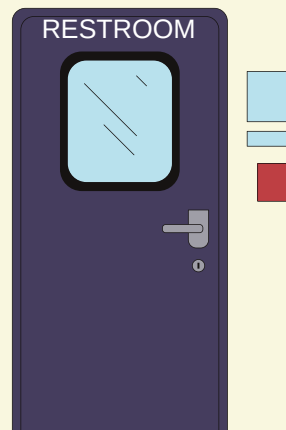


TRAIN TIPS

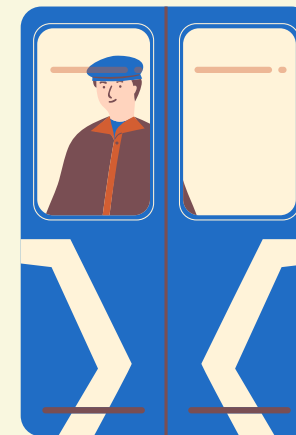
I will keep my ticket out since the conductor will ask to see it again.



If I need to use the restroom on the train, I will make sure to wait my turn if there's a line and lock the door once I'm in there.



Before the train arrives at my stop, I will make sure I have all of my stuff and exit safely out the nearest door.



PAautism.org

Pennsylvania's leading source of autism-related resources and information

877-231-4244

The ASERT Collaborative is funded by the Office of Developmental Programs, PA Department of Human Services.